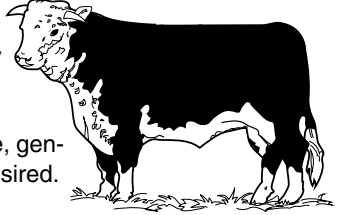


CATTLE

GENERAL RULES

All cattle must be registered or eligible for registration. Entries must be owned by, and registered in the name of the exhibitor. Cattle must be tagged with the nationally accepted identification tags. An exhibitor may enter two (2) entries per section, in a maximum of two (2) sections. 10% of winnings will be withheld as a subscription for the ensuing year. \$1,000,000 Liability insurance required. Absolutely no alcohol permitted.



- Limited power supply available, generators are encouraged if so desired.

BEEF

SATURDAY, OCTOBER 10TH, 2009

1:00 p.m.

Chairman: Brenda Buchanan

Committee: Paul Bertram, Dale Buchanan, Kevin Caldwell, Allan Lambie

If there is only one head in any Class, the committee has the right to change the Class. There must be at least three (3) entries in each Section, or prize paid for that Section will be three quarters of the prize money offered.

PRIZE MONEY: (each Class)

1st - \$50, 2nd - \$40, 3rd - \$35, 4th - \$30, 5th - \$25,
6th - \$20, 7th - \$15, All others - \$10

**CLASS 10: ABERDEEN ANGUS, HEREFORD
& SHORTHORN**

CLASS 11: CHAROLAIS, SIMMENTAL, MAINE-ANJOU

**CLASS 12: LIMOUSIN, GALLOWAY, GELBIEH & OTHER
BREEDS**

Section:

1. Bull Calf - 2009
2. Bull, yearling - 2008

CHAMPION & RESERVE CHAMPION BULL

- ROSETTE

3. Female Calf - 2009
4. Heifer, born Jan. 2008 - March 31, 2008
5. Heifer, born April 2008 - Dec.31 2008
6. Female born 2007, with 2009 calf at foot
7. Female born 2006 or earlier, with 2009 calf at foot. The cow and her calf are to be judged as a unit in this Section. The placing of the cow and calf units is left to the discretion of the Judge.

CHAMPION & RESERVE CHAMPION FEMALE

- ROSETTE

8. Breeder's Herd (bred by exhibitor) A group of 4 animals. Both sexes to be represented. Each animal in the group must have been exhibited in one of the above Sections.
9. Get - of - Sire: Group of 3 animals from same sire, both sexes represented and must be bred and owned by the exhibitor. Each animal in the group must have been exhibited in one of the above Sections.

SPECIALS:

PRIZE MONEY:

1st - \$30, 2nd - \$25, 3rd - \$20, \$10 for each worthy entry

All entries into the Special Class must not be previously shown in any other section.

10. Best Steer: Purebred, Grade or Crossbred on grounds
11. Best Senior Yearling Heifer: born after January 1, 2008
12. Best Calf Heifer: Purebred, Grade or Crossbred, born after January 1, 2009
(Heifer must not have been shown in any other Section)

- BEST FEMALE OVERALL
- BEST MALE, OVERALL
- CHAMPION GET - OF - SIRE
- EXHIBITOR EXHIBITING GREATEST NUMBER OF ENTRIES

Generously Supported by:

ADANAC HEREFORDS
ARIDALE FARM
DON McGRATH
HOWARD & MADELENE MARTIN
FLOS AGRICULTURAL SOCIETY

In Loving Memory
of Directors and Members
of

Flos Agricultural Society

You're gone from us,
but in our memories
we will always be together.

Your Fair Friends



CATTLE

GENERAL RULES

All cattle must be registered or eligible for registration. Entries must be owned by, and registered in the name of the exhibitor. Cattle must be tagged with the nationally accepted identification tags. An exhibitor may enter two (2) entries per section, in a maximum of two (2) sections. 10% of winnings will be withheld as a subscription for the ensuing year. \$1,000,000 Liability insurance required. Absolutely no alcohol permitted.

- Limited power supply available, generators are encouraged if so desired.

DAIRY

SATURDAY, OCTOBER 10TH, 2009

1:00 p.m.

Chairman: Max Spence

Committee: Colin Elliott, Tony Nahuis, Ken Parnell

There must be at least three (3) entries in each Section, or prize money for that Section shall be three quarters of the monies offered.

PRIZE MONEY: (each Class)

**1st - \$45, 2nd - \$35, 3rd - \$25, 4th - \$23, 5th - \$20,
6th - \$15, 7th - \$13, 8th - \$10, 9th - \$8, 10th - \$6**

CLASS 14: HOLSTEINS

CLASS 15: ALL OTHER DAIRY BREEDS

Section:

1. Pre-Junior calf, born after March 1, 2009
2. Junior Heifer, born after Dec. 1, 2008
3. Junior Heifer, born Sept.1, 2008 to Nov. 30, 2008
4. Intermediate Heifer, born March 1, 2008 to Aug. 31, 2008
5. Female, born Sept. 1, 2007 to Feb. 29, 2008

CHAMPION & RESERVE CHAMPION JUNIOR FEMALE

Champion Prize: Sponsored by Noble Insurance \$50.00

Reserve Champion Prize: Rosette

6. Junior herd, 3 animals
7. Female, 2 yr old, born Sept. 1, 2006 to Aug. 31, 2007
8. Female, 3 yr old, born Sept 1, 2005 to Aug. 31, 2006
9. Female, 4 yr old, born Sept.1, 2004 to Aug. 31, 2005
10. Mature Cow, born before Sept.1, 2004

CHAMPION & RESERVE CHAMPION SENIOR FEMALE

Champion Prize: Sponsored by Noble Insurance \$50.00

Reserve Champion Prize: Rosette

GRAND & RESERVE GRAND CHAMPION FEMALE

Champion Prize: Sponsored by Noble Insurance \$50.00

Reserve Champion Prize: Rosette

11. Best Udder (1st & 2nd prize only)
12. Exhibitor Herd (3 animals)

SPECIAL - FLOS AGRICULTURAL SOCIETY AWARD:

BEST HERD OF HOLSTEINS

BEST HERD OF ALL OTHER DAIRY BREEDS